

Tracy Public Cemetery District

Board Meeting Minutes
Of
March 25, 2026

Regular Board Meeting called to order at 5:28 pm by Chairman Kaska at the Tracy Public Cemetery office-Schulte location.

Roll Call: Present: Chairman Bill Kaska, Trustee Kevin Tobeck, Trustee Scott Arganbright, Trustee Derrick Davis, Cemetery Operations Supervisor Kimberly Jager-Queirolo, and Office Admin Loran Prater

Review of Agenda Items:

Visitors in Attendance: Brian Hughes, Best Best and Krieger

Comments from the Floor: None

Minutes: The Regular Session Meeting Minutes for February 11, 2026, were approved by motion of Trustee Tobeck, second by Trustee Davis, motion passed unanimously.

Financial Report: Financial reports for January 2026, were approved by motion of Trustee Arganbright, second by Trustee Davis, motion passed unanimously.

Monthly Interments: A copy of the February 2026 Burial Report was included in the meeting packet; total for Schulte Location: 6 burials which included 3 full casket burials, 0 infant burials and 3 cremation burials, 2 At-Need and 4 Pre-Need. Total for Valpico Memorial Park 7 burial which includes 5 full casket burials, 2 cremation burial and 0 baby burials. 6 At-Need and 1 Pre-Need.

Pre-Need Account: The cash amount of pre-paid interment rights and services used (Schulte) for the month of February 2026, \$900.00. The cash amount of pre-paid interment rights and services used (Valpico) for the month of February 2026, \$1,500.00

Review of Warrants: Warrants of February 3, 2026 and February 18, 2026, were approved by motion of Trustee Tobeck, second by Trustee Arganbright, motion passed unanimously.

Old Business:

A. District Business:

1. **Ordinance:** Brian Hughes BBK reported this will go to City Council and he suggested that Trustees go to the City Council meeting. There is no notification of the date at this time. Update at next meeting.
2. **4 Pillars:** Trustee Arganbright reported that the owners of Gallagher signs are on vacation for 2 weeks. Update at next meeting.
3. **Rules and Regulation:** Brian Hughes from BBK reported he will review rules and regulations about items left at the grave and district responsibility. Update at next meeting.
4. **700 Form:** Operations Supervisor Queirolo advised the Trustees they need to complete their 700 form and had 700 forms available for them.
5. **Bench Donation Valpico Memorial Park:** Operations Supervisor Queirolo reminded the Trustees that the bench donation at Valpico Memorial Park will be held on Friday, March 27, 2026, at 10:00AM.
6. **Board Member Opening:** Trustee Arganbright reported that we have a board member position opening and that it will be posted in the newspaper.

- 7. **Wrought Iron Fence:** Office Admin Loran Prater reported she got a quote from Dunn Edwards Paints for oil-based paint and water-based paint with supplies for the wrought iron fence at the Schulte location. We will create an account with Dunn Edwards to get the same rate for the City of Tracy/Public Works/Parks and Rec. This project will be started as time permits. Update at next meeting.
- 8. **Tuff Shed Pump House:** Operations Supervisor Queirolo reported there is water damage on the roof of the Tuff Shed pump house at the Schulte location. Operations Supervisor Queirolo said she would speak to the groundskeepers to see if they could make repairs before reaching out for any quotes. Update at next meeting.
- 9. **Weed Abatement Valpico:** Operations Supervisor Queirolo reported she received a quote from Pereira construction in the amount of \$3050.00 to do the weed abatement. Operations Supervisor Queirolo to call Pereira to get this started. Update at next meeting.
- 10. **Grover Landscaping quote:** Operations supervisor Queirolo reported that Grover Landscaping provided a quote for crab grass and broad leaf weed treatments at both locations in the amount of \$5,500.00 for the Schulte location for each Treatment and \$1,350.00 at Valpico Memorial Park per treatment. The Trustees asked the manager to get more information on this from Grover Landscaping first. Update at next meeting.
- 11. **TCM Bank Credit Card:** Trustee Davis made a motion to remove Maylene Warner and to add Operations Supervisor Kimberly Jager-Queirolo to the Tracy Public Cemetery District credit card through TCM Bank, second made by Trustee Arganbright. Motion passed unanimously.

A. Schulte Memorial Park

Solar Lights: Operations Supervisor Queirolo reported that we received 8 new solar lights and just received the poles 2 days ago. The groundskeepers will start installing poles and solar lights to the north side of the Schulte cemetery. Update at next meeting.

B. Valpico Memorial Park:

Valpico Expansion: NJA Architecture will be coming to the April 2026 board meeting. Update at next meeting.

Closed Session: Closed session started at 7:24 pm to discuss personnel.

There being no further business to discuss, the Regular Meeting was adjourned at 8:12 pm by Chairman Kaska.

Respectfully,

Loran Prater
Office Admin

TRACY PUBLIC CEMETERY DISTRICT
 Profit and Loss by Class
 July 2025 through February 2026

	SCHULTE	ENDOW	PRE-NEED	VALPICO	ENDOW	PRE-NEED	TOTAL
3016 · Disinterment Fee Income	3,300.00	0.00	0.00	0.00	0.00	0.00	0.00
3005 · Lot Sales	30,000.00	0.00	0.00	128,350.00	0.00	0.00	128,350.00
3010 · Endowment Sales	0.00	15,150.00	0.00	0.00	54,000.00	0.00	59,150.00
3015 · Open/Close	35,000.00	0.00	38,900.00	59,950.00	0.00	93,500.00	192,350.00
3020 · Vault Sales	10,500.00	0.00	11,100.00	28,800.00	0.00	21,500.00	61,500.00
3025 · Vault Handling Fee	5,150.00	0.00	5,500.00	14,200.00	0.00	10,700.00	30,400.00
3030 · Saturday Service Fee	0.00	0.00	0.00	1,950.00	0.00	0.00	1,950.00
3040 · Non Resident Fee	14,200.00	0.00	6,600.00	10,900.00	0.00	2,900.00	20,400.00
3042 · Misc Sales	1,650.00	0.00	0.00	850.00	0.00	150.00	1,000.00
3045 · Curr-Taxes-Secured	784,350.64	0.00	0.00	0.00	0.00	0.00	0.00
3046 · Curr-Taxes-Unsecured	88,833.26	0.00	0.00	0.00	0.00	0.00	0.00
3048 · Supplemental-Taxes	7,343.18	0.00	0.00	0.00	0.00	0.00	0.00
3049 · State HOPTR	3,483.43	0.00	0.00	0.00	0.00	0.00	0.00
3064 · Interest-STIFEL Advisors	0.00	81,251.47	0.00	0.00	0.00	0.00	81,251.47
3065 · Interest-County-Pre-Need	75,843.00	0.00	0.00	0.00	0.00	0.00	0.00
3066 · Interest-County-Gen-Res	47,834.00	0.00	0.00	0.00	0.00	0.00	0.00
3068 · Interest-County General	119,834.00	0.00	0.00	0.00	0.00	0.00	0.00
3073 · Interest-Cap Improvement Fund	42,992.00	0.00	0.00	0.00	0.00	0.00	0.00
3070 · Interest-Bank	114.78	0.00	0.00	0.00	0.00	0.00	0.00
3071 · Misc	1,562.24	0.00	0.00	0.00	0.00	0.00	0.00
3080 · Securities Gains/Losses	0.00	2,755.67	0.00	0.00	0.00	0.00	2,755.67
	1,271,990.53	99,157.14	62,100.00	245,000.00	54,000.00	128,850.00	589,107.14
4005 · Vault Purchase	20,515.00	0.00	0.00	12,045.00	0.00	0.00	12,045.00
4010 · Buy Backs / Refunds							
4012 · Lot Buy Back	1,850.00	0.00	0.00	0.00	0.00	0.00	0.00
4014 · Opening / Closing Refund	2,800.00	0.00	0.00	0.00	0.00	0.00	0.00
4014-2 · Vault Buy Back	2,400.00	0.00	0.00	0.00	0.00	0.00	0.00
Total 4010 · Buy Backs / Refunds	7,050.00	0.00	0.00	0.00	0.00	0.00	0.00
	27,565.00	0.00	0.00	12,045.00	0.00	0.00	12,045.00
	1,244,425.53	99,157.14	62,100.00	232,955.00	54,000.00	128,850.00	577,062.14
5155 · Life Insurance	284.11	0.00	0.00	0.00	0.00	0.00	0.00
5105 · Salaries Regular	344,797.00	0.00	0.00	0.00	0.00	0.00	0.00
5120 · Salaries Overtime	47,394.01	0.00	0.00	0.00	0.00	0.00	0.00
5130 · Retirement	127,630.27	0.00	0.00	0.00	0.00	0.00	0.00
5140 · Payroll Taxes							
FICA	24,315.81	0.00	0.00	0.00	0.00	0.00	0.00
Medicare	5,686.77	0.00	0.00	0.00	0.00	0.00	0.00

TRACY PUBLIC CEMETERY DISTRICT

Profit and Loss by Class

July 2025 through February 2026

	SCHULTE	ENDOW	PRE-NEED	VALPICO	ENDOW	PRE-NEED	TOTAL
SDI							
State Unemployment	-4,799.86	0.00	0.00	0.00	0.00	0.00	0.00
Total 5140 - Payroll Taxes	17,848.92	0.00	0.00	0.00	0.00	0.00	0.00
5150 - Health Insurance	43,051.64	0.00	0.00	0.00	0.00	0.00	0.00
5160 - Dental Insurance	172,441.41	0.00	0.00	0.00	0.00	0.00	0.00
5165 - Vision Care	6,034.45	0.00	0.00	0.00	0.00	0.00	0.00
5205 - Office Expense	1,816.24	0.00	0.00	0.00	0.00	0.00	0.00
5210 - Postage	20,550.22	0.00	0.00	3,175.45	0.00	0.00	3,175.45
5220 - Meeting Expense	808.23	0.00	0.00	0.00	0.00	0.00	0.00
5225 - Membership/Subscription Expense	2,370.10	0.00	0.00	5,341.08	0.00	0.00	5,341.08
5227 - Transportation	786.00	0.00	0.00	0.00	0.00	0.00	0.00
5230 - Prof Service	1,059.30	0.00	0.00	298.76	0.00	0.00	298.76
Security Services							
5230 - Prof Service - Other	7,395.00	0.00	0.00	6,937.50	0.00	0.00	6,937.50
Total 5230 - Prof Service	26,053.67	0.00	0.00	2,913.48	0.00	0.00	2,913.48
5240 - Sales Tax	33,448.67	0.00	0.00	9,850.98	0.00	0.00	9,850.98
5305 - Fuel-Oil-Lube	7,095.08	0.00	0.00	0.00	0.00	0.00	0.00
5315 - Uniforms & Laundry	5,980.40	0.00	0.00	1,141.45	0.00	0.00	1,141.45
5320 - Utility Expense	9,571.66	0.00	0.00	0.00	0.00	0.00	0.00
5405 - Maint-Equipment	44,639.04	0.00	0.00	13,563.53	0.00	0.00	13,563.53
5410 - Tire-Repair	9,090.56	0.00	0.00	960.73	0.00	0.00	960.73
5415 - Maint-Building/Grounds	680.13	0.00	0.00	0.00	0.00	0.00	0.00
5450 - Capital Expenditures	46,338.81	0.00	0.00	28,330.23	0.00	0.00	28,330.23
	70,914.59	0.00	0.00	0.00	0.00	0.00	0.00
	996,681.92	0.00	0.00	62,662.21	0.00	0.00	62,662.21
	247,743.61	99,157.14	62,100.00	170,292.79	54,000.00	128,850.00	514,399.93
Net Income	702.53	0.00	0.00	0.00	0.00	0.00	0.00
	702.53	0.00	0.00	0.00	0.00	0.00	0.00
	-702.53	0.00	0.00	0.00	0.00	0.00	0.00
	247,041.08	99,157.14	62,100.00	170,292.79	54,000.00	128,850.00	514,399.93

11:16 AM

04/01/26

Accrual Basis

TRACY PUBLIC CEMETERY DISTRICT

Balance Sheet

As of February 28, 2026

	Feb 28, 26
ASSETS	
Current Assets	
Checking/Savings	
1001 · Cash General	23,948.05
1101 · Cash In Bank -General Operating	55,507.58
1112 · Cash In Bank-Pre-Need	77,225.00
1172 · Cash In Bank-Endowment	5,450.00
44101 · Cash in County-General operatin	3,989,574.01
44102 · Cash In County-Gen Reserve	1,514,544.51
44105 · Cash In County-Pre-Need	2,508,986.12
44191 · Capital Improvements Fund	1,445,790.30
Total Checking/Savings	9,621,025.57
Other Current Assets	
1273 · Endowment Acct	1,979,963.93
1274 · Endowment Interest Acct	1,227,270.33
1400 · Returned Checks	-107.00
1900 · Prepaid Expenses	-1,514.00
Total Other Current Assets	3,205,613.26
Total Current Assets	12,826,638.83
Fixed Assets	
2500 · Valpico Land	3,314,661.31
2150 · Land Improvements	384,836.19
2200 · Building	517,847.00
2300 · Furniture & Equipment	514,866.69
2400 · Accumulated Depreciation	-1,063,476.89
Total Fixed Assets	3,668,734.30
TOTAL ASSETS	16,495,373.13
LIABILITIES & EQUITY	
Liabilities	
Current Liabilities	
Other Current Liabilities	
2076 · Deferred Inflows	58,663.00
2075 · Deferred Outflows	-337,757.00
2090 · Deferred Income Pre-Need	981,651.00
2070-0 · Pension Liability	1,016,587.00
2010 · Accounts Payable - Manual	12,115.00
2020 · Wages Payable	4,915.00
2030 · Payroll Liabilities	801.65
2050 · Accrued Vacation	38,485.67
Total Other Current Liabilities	1,775,461.32
Total Current Liabilities	1,775,461.32
Long Term Liabilities	
2080-0 Health Insurance Retiree	96,218.00
Total Long Term Liabilities	96,218.00
Total Liabilities	1,871,679.32

TRACY PUBLIC CEMETERY DISTRICT

Balance Sheet

As of February 28, 2026

	<u>Feb 28, 26</u>
Equity	
2800 · Fixed Assets Equity	3,516,836.00
2810 · Endowment Equity	1,073,811.02
2820 · General Fund Equity	2,451,350.39
2850 · Pre-Need Equity	96,587.00
3000 · Opening Bal Equity	108,714.88
3900 · Retained Earnings	6,614,953.51
Net Income	761,441.01
	<hr/>
Total Equity	14,623,693.81
	<hr/>
TOTAL LIABILITIES & EQUITY	16,495,373.13
	<hr/> <hr/>

TRACY PUBLIC CEMETERY DISTRICT
 Profit & Loss Prev Year Comparison
 July 2025 through February 2026

	Jul '25 - Feb 26	Jul '24 - Feb 25	\$ Change	% Change
Ordinary Income/Expense				
Income				
3016 · Disinternment Fee Income	3,300.00	0.00	3,300.00	100.0%
3005 · Lot Sales	158,350.00	132,950.00	25,400.00	19.11%
3010 · Endowment Sales	69,150.00	61,600.00	7,550.00	12.26%
3015 · Open/Close	227,350.00	228,875.00	-1,525.00	-0.67%
3020 · Vault Sales	72,000.00	68,950.00	3,050.00	4.42%
3025 · Vault Handling Fee	35,550.00	32,150.00	3,400.00	10.58%
3030 · Saturday Service Fee	1,950.00	3,250.00	-1,300.00	-40.0%
3040 · Non Resident Fee	34,600.00	23,100.00	11,500.00	49.78%
3042 · Misc Sales	2,650.00	2,200.00	450.00	20.46%
3045 · Curr-Taxes-Secured	784,350.64	676,223.88	108,126.76	15.99%
3046 · Curr-Taxes-Unsecured	88,833.26	75,973.30	12,859.96	16.93%
3048 · Supplemental-Taxes	7,343.18	52,863.49	-45,520.31	-86.11%
3049 · State HOPTR	3,483.43	3,494.90	-11.47	-0.33%
3064 · Interest-STIFEL Advisors	81,251.47	78,666.54	2,584.93	3.29%
3065 · Interest-County-Pre-Need	75,843.00	70,206.00	5,637.00	8.03%
3066 · Interest-County-Gen-Res	47,834.00	67,953.00	-20,119.00	-29.61%
3068 · Interest-County General	119,834.00	87,813.00	32,021.00	36.47%
3073 · Interest-Cap Improvement Fund	42,992.00	40,238.00	2,754.00	6.84%
3070 · Interest-Bank	114.78	163.50	-48.72	-29.8%
3071 · Misc	1,562.24	48.35	1,513.89	3,131.11%
3080 · Securities Gains/Losses	2,755.67	26,783.53	-24,027.86	-89.71%
Total Income	1,861,097.67	1,733,502.49	127,595.18	7.36%
Cost of Goods Sold				
4005 · Vault Purchase	32,560.00	26,971.00	5,589.00	20.72%
4010 · Buy Backs / Refunds				
4012 · Lot Buy Back	1,850.00	600.00	1,250.00	208.33%
4013 · Non Resident Refund	0.00	400.00	-400.00	-100.0%
4014 · Opening / Closing Refund	2,800.00	900.00	1,900.00	211.11%
4014-2 · Vault Buy Back	2,400.00	360.00	2,040.00	566.67%
Total 4010 · Buy Backs / Refunds	7,050.00	2,260.00	4,790.00	211.95%
Total COGS	39,610.00	29,231.00	10,379.00	35.51%
Gross Profit	1,821,487.67	1,704,271.49	117,216.18	6.88%
Expense				
5155 · Life Insurance	284.11	0.00	284.11	100.0%
5105 · Salaries Regular	344,797.00	320,049.25	24,747.75	7.73%
5120 · Salaries Overtime	47,394.01	48,879.38	-1,485.37	-3.04%
5130 · Retirement	127,630.27	130,449.99	-2,819.72	-2.16%
5140 · Payroll Taxes				
FICA	24,315.81	22,873.57	1,442.24	6.31%
Medicare	5,686.77	5,349.45	337.32	6.31%

TRACY PUBLIC CEMETERY DISTRICT
 Profit & Loss Prev Year Comparison
 July 2025 through February 2026

	Jul '25 - Feb 26	Jul '24 - Feb 25	\$ Change	% Change
SDI	-4,799.86	-4,257.19	-542.67	-12.75%
State Unemployment	17,848.92	18,111.85	-262.93	-1.45%
Total 5140 · Payroll Taxes	43,051.64	42,077.68	973.96	2.32%
5150 · Health Insurance	172,441.41	129,624.30	42,817.11	33.03%
5160 · Dental Insurance	6,034.45	4,953.76	1,080.69	21.82%
5165 · Vision Care	1,816.24	1,512.77	303.47	20.06%
5170 · Workmens Comp	0.00	0.00	0.00	0.0%
5205 · Office Expense	23,725.67	20,308.97	3,416.70	16.82%
5210 · Postage	808.23	748.43	59.80	7.99%
5220 · Meeting Expense	7,711.18	7,067.60	643.58	9.11%
5225 · Membership/Subsription Expense	786.00	3,060.00	-2,274.00	-74.31%
5227 · Transportation	1,358.06	1,746.85	-388.79	-22.26%
5230 · Prof Service				
Security Services	14,332.50	0.00	14,332.50	100.0%
5230 · Prof Service - Other	28,967.15	28,830.50	136.65	0.47%
Total 5230 · Prof Service	43,299.65	28,830.50	14,469.15	50.19%
5235 · Casualty Ins	0.00	0.00	0.00	0.0%
5240 · Sales Tax	7,095.08	6,501.07	594.01	9.14%
5305 · Fuel-Oil-Lube	7,021.85	8,202.97	-1,181.12	-14.4%
5315 · Uniforms & Laundry	9,571.66	7,230.56	2,341.10	32.38%
5320 · Utility Expense	58,202.57	61,944.46	-3,741.89	-6.04%
5405 · Maint-Equipment	10,051.29	9,115.70	935.59	10.26%
5410 · Tire-Repair	680.13	137.10	543.03	396.08%
5415 · Maint-Building/Grounds	74,669.04	134,661.57	-59,992.53	-44.55%
5450 · Capital Expenditures	70,914.59	0.00	70,914.59	100.0%
Total Expense	1,059,344.13	967,102.91	92,241.22	9.54%
Net Ordinary Income	762,143.54	737,168.58	24,974.96	3.39%
Other Income/Expense				
Other Expense				
9001 · Misc Expense	702.53	0.00	702.53	100.0%
Total Other Expense	702.53	0.00	702.53	100.0%
Net Other Income	-702.53	0.00	-702.53	-100.0%
Net Income	761,441.01	737,168.58	24,272.43	3.29%

TRACY PUBLIC CEMETERY DISTRICT
Profit & Loss Budget vs. Actual

Accrual Basis

July 2025 through February 2026

	Jul '25 - Feb 26	Budget	\$ Over Budget	% of Budget
Ordinary Income/Expense				
Income				
3016 · Disinternment Fee Income	3,300.00	0.00	3,300.00	100.0%
3005 · Lot Sales	158,350.00	240,000.00	-81,650.00	66.0%
3010 · Endowment Sales	69,150.00	115,000.00	-45,850.00	60.1%
3015 · Open/Close	227,350.00	175,000.00	52,350.00	129.9%
3020 · Vault Sales	72,000.00	80,000.00	-8,000.00	90.0%
3025 · Vault Handling Fee	35,550.00	45,000.00	-9,450.00	79.0%
3030 · Saturday Service Fee	1,950.00	6,000.00	-4,050.00	32.5%
3040 · Non Resident Fee	34,600.00	30,000.00	4,600.00	115.3%
3042 · Misc Sales	2,650.00	6,000.00	-3,350.00	44.2%
3045 · Curr-Taxes-Secured	784,350.64	1,400,000.00	-615,649.36	56.0%
3046 · Curr-Taxes-Unsecured	88,833.26	0.00	88,833.26	100.0%
3048 · Supplemental-Taxes	7,343.18	0.00	7,343.18	100.0%
3049 · State HOPTR	3,483.43	0.00	3,483.43	100.0%
3064 · Interest-STIFEL Advisors	81,251.47	200,000.00	-118,748.53	40.6%
3065 · Interest-County-Pre-Need	75,843.00	0.00	75,843.00	100.0%
3066 · Interest-County-Gen-Res	47,834.00	0.00	47,834.00	100.0%
3068 · Interest-County General	119,834.00	0.00	119,834.00	100.0%
3073 · Interest-Cap Improvement Fund	42,992.00	0.00	42,992.00	100.0%
3070 · Interest-Bank	114.78	0.00	114.78	100.0%
3071 · Misc	1,562.24	0.00	1,562.24	100.0%
3080 · Securities Gains/Losses	2,755.67	0.00	2,755.67	100.0%
Total Income	1,861,097.67	2,297,000.00	-435,902.33	81.0%
Cost of Goods Sold				
4005 · Vault Purchase	32,560.00	55,000.00	-22,440.00	59.2%
4010 · Buy Backs / Refunds				
4012 · Lot Buy Back	1,850.00	10,000.00	-8,150.00	18.5%
4013 · Non Resident Refund	0.00	0.00	0.00	0.0%
4014 · Opening / Closing Refund	2,800.00	0.00	2,800.00	100.0%
4014-2 · Vault Buy Back	2,400.00	0.00	2,400.00	100.0%
Total 4010 · Buy Backs / Refunds	7,050.00	10,000.00	-2,950.00	70.5%
Total COGS	39,610.00	65,000.00	-25,390.00	60.9%
Gross Profit	1,821,487.67	2,232,000.00	-410,512.33	81.6%
Expense				
5155 · Life Insurance	284.11			
5231 · County Auditor	0.00	10,000.00	-10,000.00	0.0%
5105 · Salaries Regular	344,797.00	550,000.00	-205,203.00	62.7%
5120 · Salaries Overtime	47,394.01	90,000.00	-42,605.99	52.7%
5130 · Retirement	127,630.27	214,000.00	-86,369.73	59.6%
5140 · Payroll Taxes				
FICA	24,315.81	0.00	24,315.81	100.0%
Medicare	5,686.77	0.00	5,686.77	100.0%
SDI	-4,799.86	0.00	-4,799.86	100.0%
State Unemployment	17,848.92	0.00	17,848.92	100.0%
5140 · Payroll Taxes - Other	0.00	70,000.00	-70,000.00	0.0%
Total 5140 · Payroll Taxes	43,051.64	70,000.00	-26,948.36	61.5%
5150 · Health Insurance	172,441.41	245,000.00	-72,558.59	70.4%
5160 · Dental Insurance	6,034.45	0.00	6,034.45	100.0%
5165 · Vision Care	1,816.24	5,000.00	-3,183.76	36.3%
5170 · Workmens Comp	0.00	29,000.00	-29,000.00	0.0%
5205 · Office Expense	23,725.67	35,000.00	-11,274.33	67.8%
5210 · Postage	808.23	1,500.00	-691.77	53.9%
5220 · Meeting Expense	7,711.18	14,000.00	-6,288.82	55.1%
5225 · Membership/Subscription Expense	786.00	3,500.00	-2,714.00	22.5%
5227 · Transportation	1,358.06	0.00	1,358.06	100.0%
5230 · Prof Service				
Security Services	14,332.50			
5230 · Prof Service - Other	28,967.15	65,000.00	-36,032.85	44.6%
Total 5230 · Prof Service	43,299.65	65,000.00	-21,700.35	66.6%

TRACY PUBLIC CEMETERY DISTRICT
Profit & Loss Budget vs. Actual

Accrual Basis

July 2025 Through February 2026

	Jul '25 - Feb 26	Budget	\$ Over Budget	% of Budget
5235 · Casualty Ins	0.00	20,500.00	-20,500.00	0.0%
5240 · Sales Tax	7,095.08	13,000.00	-5,904.92	54.6%
5305 · Fuel-Oil-Lube	7,021.85	15,000.00	-7,978.15	46.8%
5315 · Uniforms & Laundry	9,571.66	14,000.00	-4,428.34	68.4%
5320 · Utility Expense	58,202.57	100,000.00	-41,797.43	58.2%
5330 · Equipment Purchase	0.00	25,000.00	-25,000.00	0.0%
5405 · Maint-Equipment	10,051.29	25,000.00	-14,948.71	40.2%
5410 · Tire-Repair	680.13	0.00	680.13	100.0%
5415 · Maint-Building/Grounds	74,669.04	200,000.00	-125,330.96	37.3%
5450 · Capital Expenditures	70,914.59	270,000.00	-199,085.41	26.3%
9800 · Endowment Transfers	0.00	85,000.00	-85,000.00	0.0%
9805 · Pre-need Transfers	0.00	85,000.00	-85,000.00	0.0%
Total Expense	1,059,344.13	2,184,500.00	-1,125,155.87	48.5%
Net Ordinary Income	762,143.54	47,500.00	714,643.54	1,604.5%
Other Income/Expense				
Other Expense				
9001 · Misc Expense	702.53	47,500.00	-46,797.47	1.5%
Total Other Expense	702.53	47,500.00	-46,797.47	1.5%
Net Other Income	-702.53	-47,500.00	46,797.47	1.5%
Net Income	761,441.01	0.00	761,441.01	100.0%

TRACY PUBLIC CEMETERY DISTRICT
Profit & Loss Budget vs. Actual
July 2025 through February 2026

	Jul 25	Aug 25	Sep 25	Oct 25	Nov 25	Dec 25	Jan 26	Feb 26	Jul 25 - Feb 26	Budget	\$ Over Budget	% of Budget
5210 - Postage	72.90	461.60	54.22	22.00	56.12	58.50	35.70	46.19	808.23	1,500.00	-691.77	53.88%
5220 - Meeting Expense	666.54	725.24	993.20	548.63	3,001.54	530.23	458.27	779.53	7,711.18	14,000.00	-6,288.82	55.08%
5225 - Membership/Subscription Expense	0.00	0.00	0.00	0.00	397.00	0.00	388.00	0.00	786.00	3,500.00	-2,714.00	22.46%
5227 - Transportation	0.00	427.70	0.00	587.36	0.00	0.00	343.00	0.00	1,358.06	0.00	1,358.06	100.0%
5230 - Prof Service	1,700.00	1,700.00	3,400.00	1,700.00	0.00	1,837.50	2,285.00	1,700.00	14,332.50	65,000.00	-50,667.50	77.8%
Security Services	3,246.00	1,071.60	2,181.26	1,029.00	364.20	4,003.25	7,580.05	9,491.78	28,987.15	65,000.00	-36,012.85	44.57%
5230 - Prof Service - Other	4,946.00	2,771.80	5,581.26	2,729.00	364.20	5,940.75	9,875.05	11,181.79	43,289.65	65,000.00	-21,710.35	66.62%
5235 - Casualty Ins	0.00	0.00	0.00	0.00	0.00	0.00	0.00	0.00	0.00	20,500.00	-20,500.00	0.0%
5240 - Sales Tax	0.00	2,194.50	0.00	1,534.58	0.00	0.00	3,366.00	0.00	7,1095.08	13,000.00	-5,904.82	54.58%
5305 - Fuel-Oil-Tubs	0.00	1,229.02	0.00	1,386.84	175.00	1,353.84	1,291.45	1,585.70	7,021.85	15,000.00	-7,978.15	46.81%
5315 - Uniforms & Laundry	684.46	1,813.01	625.62	680.43	1,112.44	2,061.95	1,858.60	734.95	9,571.66	14,000.00	-4,428.34	68.37%
5320 - Utility Expense	7,007.03	12,098.23	5,352.44	16,749.33	947.27	4,616.39	7,481.51	3,996.97	59,202.57	100,000.00	-41,797.43	59.2%
5330 - Equipment Purchase	0.00	0.00	0.00	0.00	0.00	0.00	0.00	0.00	0.00	25,000.00	-25,000.00	0.0%
5405 - Maint-Equipment	511.70	2,472.34	1,049.38	1,421.94	1,307.04	1,930.82	1,052.19	305.89	10,051.29	25,000.00	-14,948.71	40.21%
5410 - Tire-Repair	0.00	0.00	0.00	0.00	680.13	0.00	0.00	0.00	680.13	0.00	680.13	100.0%
5415 - Maint-Building/Grounds	4,422.40	6,343.07	8,881.75	14,807.64	5,887.56	12,884.73	8,835.16	12,586.73	74,669.04	200,000.00	-125,330.96	37.34%
5450 - Capital Expenditures	86,973.38	3,941.21	0.00	0.00	0.00	0.00	0.00	0.00	70,914.59	270,000.00	-199,085.41	26.27%
9800 - Endowment Transfers	0.00	0.00	0.00	0.00	0.00	0.00	0.00	0.00	0.00	85,000.00	-85,000.00	0.0%
9805 - Pre-need Transfers	0.00	0.00	0.00	0.00	0.00	0.00	0.00	0.00	0.00	85,000.00	-85,000.00	0.0%
Total Expense	240,177.14	64,388.03	108,108.95	162,914.48	102,576.76	125,257.33	126,047.93	129,873.51	1,059,344.13	2,184,500.00	-1,125,155.87	48.49%
Net Ordinary Income	-69,874.91	32,738.10	-49,714.36	43,679.41	-4,490.49	827,178.58	25,560.03	-45,832.82	762,143.54	47,500.00	714,643.54	1,604.51%
Other Income/Expense												
Other Expense												
9001 - Misc Expense	0.00	0.00	0.00	240.00	0.00	462.53	0.00	0.00	702.53	47,500.00	-46,797.47	1.48%
Total Other Expense	0.00	0.00	0.00	240.00	0.00	462.53	0.00	0.00	702.53	47,500.00	-46,797.47	1.48%
Net Other Income	0.00	0.00	0.00	-240.00	0.00	-462.53	0.00	0.00	-702.53	-47,500.00	46,797.47	1.48%
Net Income	-69,874.91	32,738.10	-49,714.36	43,439.41	-4,490.49	826,716.05	25,560.03	-45,832.82	761,441.01	0.00	761,441.01	100.0%

SCHULTE MEMORIAL PARK

<u>Month</u>	<u>Full</u>	<u>Baby</u>	<u>Ash</u>	<u>AN</u>	<u>PN</u>	<u>PN USED</u>	<u>2026 Burials</u>
January	3	0	3	0	6	\$4,450.00	6
February	3	0	3	2	4	\$900.00	6
March	7	0	2	0	9	\$6,100.00	9
April							
May							
June							
July							
August							
September							
October							
November							
December							
Totals	13	0	8	2	19	\$11,450.00	21

VALPICO MEMORIAL PARK

<u>MONTH</u>	<u>FULL</u>	<u>BABY</u>	<u>ASH</u>	<u>AN</u>	<u>PN</u>	<u>PN USED</u>	<u>2026 Burials</u>
January	7	0	1	7	1	\$2,050.00	8
February	5	0	2	6	1	\$1,500.00	7
March	4	0	0	3	1	\$8,050.00	4
April							
May							
June							
July							
August							
September							
October							
November							
December							
Totals	16	0	3	16	3	\$11,600.00	19

2:19 PM
 03/03/2026
 Accrual Basis

TRACY PUBLIC CEMETERY DISTRICT
 Warrant Request

March 3, 2026

Name Address	Num	Spend Cat.	Split	Amount
A-1 WATER QUALITY				
1950 E. Pachaco Blvd Los Banos, Ca 93635	13446	61774SC	4014FD Tracy Cemetery	84.90
Total A-1 WATER QUALITY			40194CC Tracy Cemetery District	84.90
Animal Damage Management				
16170 Vineyard Blvd #150 Morgan Hill, CA 95037	13449	61614SC	4014FD Tracy Cemetery	190.00
16170 Vineyard Blvd #150 Morgan Hill, CA 95037	13449	61614SC	40194CC Tracy Cemetery District	128.00
Total Animal Damage Management				318.00
B.J.'S CONSUMER'S CHOICE PEST CONTROL				
P.O. Box 2249 MANTECA, CA 95336	13448	61614SC	4014FD Tracy Cemetery	500.00
Total B.J.'S CONSUMER'S CHOICE PEST CONTROL			40194CC Tracy Cemetery District	500.00
BAKER SUPPLIES AND REPAIRS				
P O BOX 626 LOS BANOS, CA 93635	13444	60203SC	4014FD Tracy Cemetery	1,529.48
Total BAKER SUPPLIES AND REPAIRS			40194CC Tracy Cemetery District	1,529.48
Best Best & Krieger, Attorney at Law				
P.O BOX 1028 RIVERSIDE, CA 92502	13442	60425SC	4014FD Tracy Cemetery	988.00
P.O BOX 1028 RIVERSIDE, CA 92502	13442	60425SC	40194CC Tracy Cemetery District	186.00
P.O BOX 1028 RIVERSIDE, CA 92502	13442	60425SC		2,938.50
Total Best Best & Krieger, Attorney at Law				4,112.50
CALIFORNIA SCHOOL BOARDS ASSOCIATION				
3251 BEACON BLVD WEST SACRAMENTO, CA 95691	13450	60426SC	4014FD Tracy Cemetery	2,000.00
Total CALIFORNIA SCHOOL BOARDS ASSOCIATION			40194CC Tracy Cemetery District	2,000.00
EWING				
3441 EAST HARBOUR DR PHOENIX, AZ 85034	13445	61614SC	4014FD Tracy Cemetery	400.37
Total EWING			40194CC Tracy Cemetery District	400.37
HOME DEPOT CREDIT SERVICES DEPT.				
PO BOX 70293 PHILADELPHIA, PA 19176-0293	13443	61614SC	4014FD Tracy Cemetery	180.96
PO BOX 70293 PHILADELPHIA, PA 19176-0293	13443	61614SC	40194CC Tracy Cemetery District	558.17
Total HOME DEPOT CREDIT SERVICES DEPT.				739.13
MISSION UNIFORM SERVICE				
136 Coyado ave Modesto, Ca 95350-5813	13452	60410SC	4014FD Tracy Cemetery	839.76
Total MISSION UNIFORM SERVICE			40194CC Tracy Cemetery District	839.76
NNIS, INC.				
1660 W LINNE RD. STE 121 TRACY, CA 95377	13454	60140SC	4014FD Tracy Cemetery	350.00
1660 W LINNE RD. STE 121 TRACY, CA 95377	13454	60140SC	40194CC Tracy Cemetery District	100.00
Total NNIS, INC.				450.00
RESILIENT PROTECTIVE SERVICES, INC				
241 E 10TH ST., STE A TRACY, CA 95376-4076	13456	60425SC	4014FD Tracy Cemetery	877.50
241 E 10TH ST., STE A TRACY, CA 95376-4076	13456	60425SC	40194CC Tracy Cemetery District	850.00
Total RESILIENT PROTECTIVE SERVICES, INC				1,727.50
STREAMLINE				
PO BOX 207561 DALLAS, TX 75320-7591	13451	60140SC	4014FD Tracy Cemetery	4,200.00
PO BOX 207561 DALLAS, TX 75320-7591	13451	60140SC	40194CC Tracy Cemetery District	1,200.00
Total STREAMLINE				5,400.00
SUBURBAN PROPANE				
P.O.BOX 12027 FRESNO, CA 93776-2027	13455	60226SC	4014FD Tracy Cemetery	50.00
Total SUBURBAN PROPANE			40194CC Tracy Cemetery District	50.00
UBEO WEST LLC				
PO BOX 790448 ST. LOUIS, MO 63179-0448	13447	60140SC	4014FD Tracy Cemetery	381.20
PO BOX 790448 ST. LOUIS, MO 63179-0448	13447	60140SC	40194CC Tracy Cemetery District	190.61
Total UBEO WEST LLC				571.81
VAN'S ACE HARDWARE				
2695 N TRACY BLVD Tracy Ca 95376	13453	61614SC	4014FD Tracy Cemetery	322.52
Total VAN'S ACE HARDWARE			40194CC Tracy Cemetery District	322.52
VISA				
P.O BOX 6818 CAROL STREAM, IL 60197-6818	13441	61774SC	4014FD Tracy Cemetery	668.51
P.O BOX 6818 CAROL STREAM, IL 60197-6818	13441	60225SC	40194CC Tracy Cemetery District	145.50
P.O BOX 6818 CAROL STREAM, IL 60197-6818	13441	61614SC		734.81
P.O BOX 6818 CAROL STREAM, IL 60197-6818	13441	61205SC		79.53
P.O BOX 6818 CAROL STREAM, IL 60197-6818	13441	60140SC		478.72
P.O BOX 6818 CAROL STREAM, IL 60197-6818	13441	60107SC		47.08
P.O BOX 6818 CAROL STREAM, IL 60197-6818	13441	61614SC		404.48
Total VISA				2,558.63
TOTAL				21,604.60

3:02 PM
 03/06/26
 Accrual Basis

TRACY PUBLIC CEMETERY DISTRICT
 Warrant Request

Name Address	March 6, 2026		Department/Fund	Amount
	Num	Spend Cat		
ATT LONG DISTANCE CO				
P.O. BOX 5025 CAROL STREAM IL 60197-5025	13460	61774SC	4014FD Tracy Cemetery	<u>481.51</u>
Total ATT LONG DISTANCE CO			40194CC Tracy Cemetery Distri	<u>481.51</u>
BLOMBERG & GRIFFIN ACCOUNTANCY CORP				
1013 N. CALIFORNIA STREET STOCKTON, CA 95202	13459	60425SC	4014FD Tracy Cemetery	<u>4,837.50</u>
Total BLOMBERG & GRIFFIN ACCOUNTANCY CORP			40194CC Tracy Cemetery Distri	<u>4,837.50</u>
Employment Development Department				
P.O.BOX 826276 SACRAMENTO, CA 94230-6276	13461	60357SC	4014FD Tracy Cemetery	<u>2,629.40</u>
Total Employment Development Department			40194CC Tracy Cemetery Distri	<u>2,629.40</u>
GOLDEN STATE RISK MANAGEMENT				
P.O.BOX 80826 CITY OF INDUSTRY, CA 91716-8420	13463	60091SC	4014FD Tracy Cemetery	783.84
P.O.BOX 80826 CITY OF INDUSTRY, CA 91716-8420	13463	60092SC	40194CC Tracy Cemetery Distri	237.95
P.O.BOX 80826 CITY OF INDUSTRY, CA 91716-8420	13463	60077SC		<u>59.33</u>
Total GOLDEN STATE RISK MANAGEMENT				<u>1,081.12</u>
NAPA AUTO PARTS				
80 EAST 11TH ST TRACY CA 95376	13464	60203SC	4014FD Tracy Cemetery	<u>7.56</u>
Total NAPA AUTO PARTS			40194CC Tracy Cemetery Distri	<u>7.56</u>
PACIFIC GAS & ELECTRIC CO				
P.O.BOX 997300 SACRAMENTO, CA 95899	13457	61774SC	4014FD Tracy Cemetery	<u>1,791.68</u>
Total PACIFIC GAS & ELECTRIC CO			40194CC Tracy Cemetery Distri	<u>1,791.68</u>
PONTEM SOFTWARE				
PO BOX 988 JACKSON, MI 49204	13458	60196SC	4014FD Tracy Cemetery	<u>165.00</u>
Total PONTEM SOFTWARE			40194CC Tracy Cemetery Distri	<u>165.00</u>
TRACY MATERIAL RECOVERY AND SOLID WASTE				
P.O Box 93 Tracy Ca 95378	13462	61614SC	4014FD Tracy Cemetery	460.04
P.O Box 93 Tracy Ca 95378	13462	61614SC	40194CC Tracy Cemetery Distri	<u>46.36</u>
Total TRACY MATERIAL RECOVERY AND SOLID WASTE				<u>506.40</u>
TOTAL				<u><u>11,500.17</u></u>

10:58 AM
 03/16/26
 Accrual Basis

TRACY PUBLIC CEMETERY DISTRICT
 Warrant Request

March 16, 2026

Name Address	Num	SPEND CAT	DEPARTMENT FUNDS	Amount
BAY ALARM CORPORATE OFFICE				
PO BOX 51041 LOS ANGELES CA 90051-5337	13467	60425SC	4014FD Tracy Cemetery	824.78
PO BOX 51041 LOS ANGELES CA 90051-5337	13467	60425SC	40194CC Tracy Cemetery District	901.79
Total BAY ALARM CORPORATE OFFICE				1,726.57
HOME DEPOT CREDIT SERVICES DEPT.				
PO BOX 70293 PHILADELPHIA, PA 19176-0293	13469	61614SC	4014FD Tracy Cemetery	126.94
PO BOX 70293 PHILADELPHIA, PA 19176-0293	13469	61614SC	40194CC Tracy Cemetery District	1,479.31
Total HOME DEPOT CREDIT SERVICES DEPT.				1,606.25
Maylene Warner				
501 E schulte Rd Tracy, Ca 95376	13465	61774SC	4014FD Tracy Cemetery	4,000.00
Total Maylene Warner			40194CC Tracy Cemetery District	4,000.00
PUBLIC CEMETERY ALLIANCE				
POST OFFICE BOX 494 GRIDLEY, CA 95948	13468	60196SC	4014FD Tracy Cemetery	300.00
Total PUBLIC CEMETERY ALLIANCE			40194CC Tracy Cemetery District	300.00
SARVEY'S SHOES				
501 W. GRANTLINE RD TRACY, CA 95376	13466	60399SC	4014FD Tracy Cemetery	238.82
Total SARVEY'S SHOES			40194CC Tracy Cemetery District	238.82
TOTAL				7,871.64

11:06 AM
03/27/26
Accrual Basis

TRACY PUBLIC CEMETERY DISTRICT
Warrant Request

March 27, 2026

Name Address	Num	PEN	CA	DEPARTMENT FUNDS	Amount
AT & T					
P.O. BOX 5019 CAROL STREAM, IL 60197-5019	13479	61774	SC	4014FD Tracy Cemetery	690.65
Total AT & T				40194CC Tracy Cemetery District	690.65
BIG VALLEY TRACTOR/BOBCAT CENTRAL					
3516 NEWTON RD STOCKTON CA 95205	13474	60203	SC	4014FD Tracy Cemetery	1,606.05
3516 NEWTON RD STOCKTON CA 95205	13474	60203	SC	40194CC Tracy Cemetery District	782.49
Total BIG VALLEY TRACTOR/BOBCAT CENTRAL					2,388.54
CALIFORNIA ASSOCIATION OF PUBLIC CEMTERY					
P.O BOX 119 SAN JACINTO, CA 92581	13470	60196	SC	4014FD Tracy Cemetery	36.00
Total CALIFORNIA ASSOCIATION OF PUBLIC CEMTERY				40194CC Tracy Cemetery District	36.00
CalPERS					
P.O. BOX 942703 SACRAMENTO, CA 94229-2703	13480	60082	SC	4014FD Tracy Cemetery	22,973.19
Total CalPERS				40194CC Tracy Cemetery District	22,973.19
COX BROS TIRE SERVICE					
507 East 11th St Tracy Ca 95376	13478	60203	SC	4014FD Tracy Cemetery	28.79
Total COX BROS TIRE SERVICE				40194CC Tracy Cemetery District	28.79
DERRICK DAVIS					
2680 ATLANTA DR TRACY, CA 95376	13482	61205	SC	4014FD Tracy Cemetery	100.00
2680 ATLANTA DR TRACY, CA 95376	13482	61205	SC	40194CC Tracy Cemetery District	100.00
Total DERRICK DAVIS					200.00
EWING					
3441 EAST HARBOUR DR PHOENIX, AZ 85034	13475	61614	SC	4014FD Tracy Cemetery	645.06
Total EWING				40194CC Tracy Cemetery District	645.06
JOHN DEERE FINANCIAL					
P O BOX 4450 CAROL STREAM IL 60197-4450	13471	60203	SC	4014FD Tracy Cemetery	536.56
P O BOX 4450 CAROL STREAM IL 60197-4450	13471	60203	SC	40194CC Tracy Cemetery District	430.06
Total JOHN DEERE FINANCIAL					966.62
KEVIN TOBECK					
1222 Citadelle St Tracy, Ca 95304	13483	61205	SC	4014FD Tracy Cemetery	100.00
1222 Citadelle St Tracy, Ca 95304	13483	61205	SC	40194CC Tracy Cemetery District	100.00
Total KEVIN TOBECK					200.00
LILLIAN AND BRUCE BABCOCK					
120 ROLLIN COURT MYRTLE CREEK, OR 97457	13486	61259	SC	4014FD Tracy Cemetery	400.00
120 ROLLIN COURT MYRTLE CREEK, OR 97457	13486	61259	SC	40194CC Tracy Cemetery District	200.00
120 ROLLIN COURT MYRTLE CREEK, OR 97457	13486	61259	SC		250.00
120 ROLLIN COURT MYRTLE CREEK, OR 97457	13486	61259	SC		550.00
Total LILLIAN AND BRUCE BABCOCK					1,400.00
NJA ARCHITECTURE					
212 W. PINE ST STE#1 LODI, CA 95240	13487	60425	SC	4014FD Tracy Cemetery	3,125.00
Total NJA ARCHITECTURE				40194CC Tracy Cemetery District	3,125.00
PACIFIC GAS & ELECTRIC CO					
P.O.BOX 997300 SACRAMENTO, CA 95899	13472	61774	SC	4014FD Tracy Cemetery	257.06
Total PACIFIC GAS & ELECTRIC CO				40194CC Tracy Cemetery District	257.06
PEREIRA INDUSTRIAL CONSTRUCTION & MAINT					
15355 W. GRANT LINE ROAD TRACY, CA 95304	13473	61614	SC	4014FD Tracy Cemetery	2,510.67
Total PEREIRA INDUSTRIAL CONSTRUCTION & MAINT				40194CC Tracy Cemetery District	2,510.67
SCOTT G. ARGANBRIGHT					
375 Hollywood Ave	13481	61205	SC	4014FD Tracy Cemetery	100.00
TRACY, CA 95376	13481	61205	SC	40194CC Tracy Cemetery District	100.00
Total SCOTT G. ARGANBRIGHT					200.00
STOCKTON PETROLIUM CO					
P.O.Box 326 Stockton, CA 95201	13476	60225	SC	4014FD Tracy Cemetery	675.67
Total STOCKTON PETROLIUM CO				40194CC Tracy Cemetery District	675.67
TRACY LOCK & SAFE					
126 W 11TH ST TRACY, CA 95376	13477	61614	SC	4014FD Tracy Cemetery	726.57
126 W 11TH ST TRACY, CA 95376	13477	61614	SC	40194CC Tracy Cemetery District	802.49
Total TRACY LOCK & SAFE					1,529.06

11:06 AM
03/27/26
Accrual Basis

TRACY PUBLIC CEMETERY DISTRICT
Warrant Request

March 27, 2026

Name Address	Num	IPEND CA	DEPARTMENT FUNDS	Amount
VAN'S ACE HARDWARE				
2695 N TRACY BLVD Tracy Ca 95376	13485	61614SC	4014FD Tracy Cemetery	459.31
Total VAN'S ACE HARDWARE			40194CC Tracy Cemetery District	459.31
WILLIAM KASKA				
785 INDEPENDENCE DRIVE TRACY, CA 95376	13484	61205SC	4014FD Tracy Cemetery	100.00
Total WILLIAM KASKA			40194CC Tracy Cemetery District	100.00
TOTAL				38,385.62

Task Order Sheet

Please Sign and Date at Bottom and Return Via Email w/Attachment.

Job Location:	501 E. Schulte Road Tracy, CA 95376 and 12815 W. Valpico Road Tracy, CA 95376
Location Tel:	510-224-7922
Dates/Times:	Beginning 04/01/26, 7 Days/Week 7:15pm-7:45pm Valpico & 8:15pm -8:45pm Schulte
Location Contact:	Maylene Warner
Contact Tel/Email:	tpcd@alt.net
Check-In Details:	N/A
Payment Terms:	Net 15
Rate (U.S. Dollars):	Flat Rate of \$1800.00 a month, both locations. *See job details
Uniform:	Class A or B uniforms will be worn
Guard Details:	Vehicle Patrols
Job Details:	Patrol Officers will provide a visual deterrent to curb any criminal activity. Officers will patrol entire property for dangerous or illegal activity. Ensuring all visitors are off property at closing. Officers will enforce all rules of property. Officers will perform one stop at each location per night, 7 days a week for required lockups.

Date: 03/05/2026

Please Sign and Date at Bottom and Return Via Email w/Attachment.

[Tracy Public Cemetery District]

[Resilient Protective Services, Inc.]

By: Maylene C. Lopez Warner
Client Contact Name

By: Conrado D. Levoit III / Denise Garcia

Title: DISTRICT MANAGER
Client Contact Title

Title: Account Manager / Office Administrator

Sign: Maylene C. Lopez Warner

Sign: [Signature] 3/4/26

consistent with the warranties established herein.

6.12 Force Majeure: Resilient Protective Services, Inc. shall not be responsible for delays or failures if such delay arises out of causes beyond its control. Such causes may include, but are not restricted to, acts of God or of the public enemy, fires, floods, epidemics, riots, quarantine restrictions, strikes, freight embargoes, electrical outages, computer or communications failures, and severe weather, and acts or omissions of subcontractors or third parties.

6.13 Term & Termination: This agreement shall remain in full force and effect, unless otherwise agreed by both parties in writing. Said contract will automatically renew if not cancelled in accordance with this agreement.

IN WITNESS WHEREOF, the parties hereto have executed this Agreement.

Date: 03/05/2026

[Tracy Public Cemetery District]

By: Maylene C. LOPEZ WARNER
Client Contact Name

Title: DISTRICT MANAGER
Client Contact Title

Sign: Maylene C. Lopez Warner

[Resilient Protective Services, Inc.]

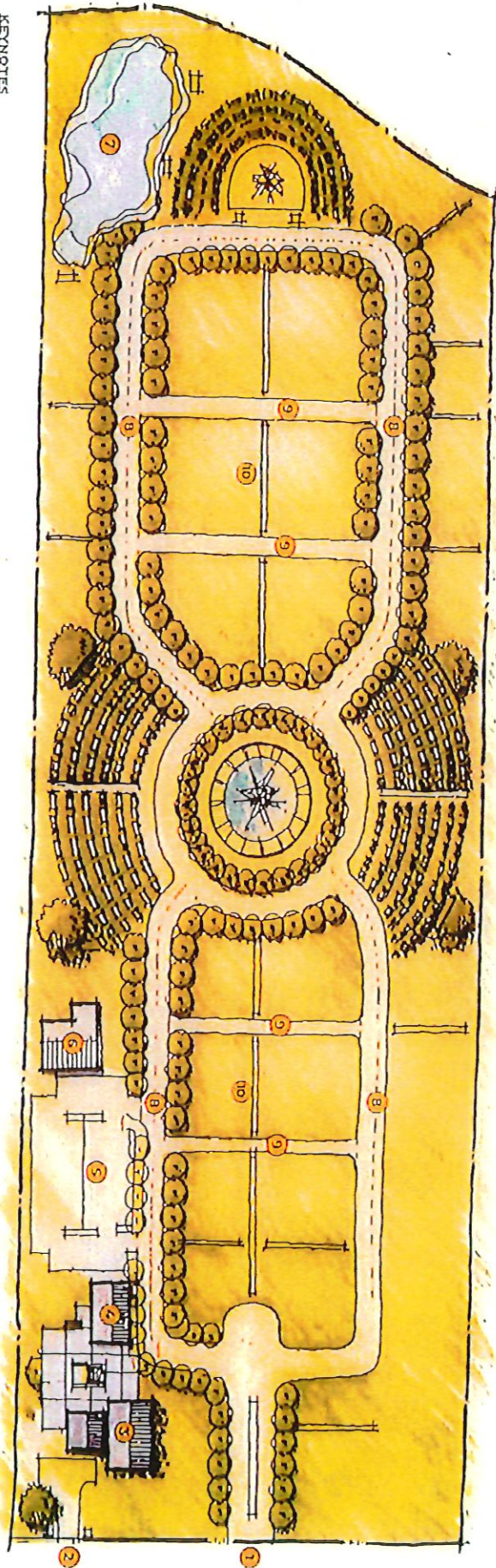
By: Conrado D. Levoit III / Denise Garcia

Title: Account Manager / Office Administrator

Sign: [Signature] 3/6/26

OPTION 1 - FORMAL

VALPICO | TRACY, CA



KEYNOTES

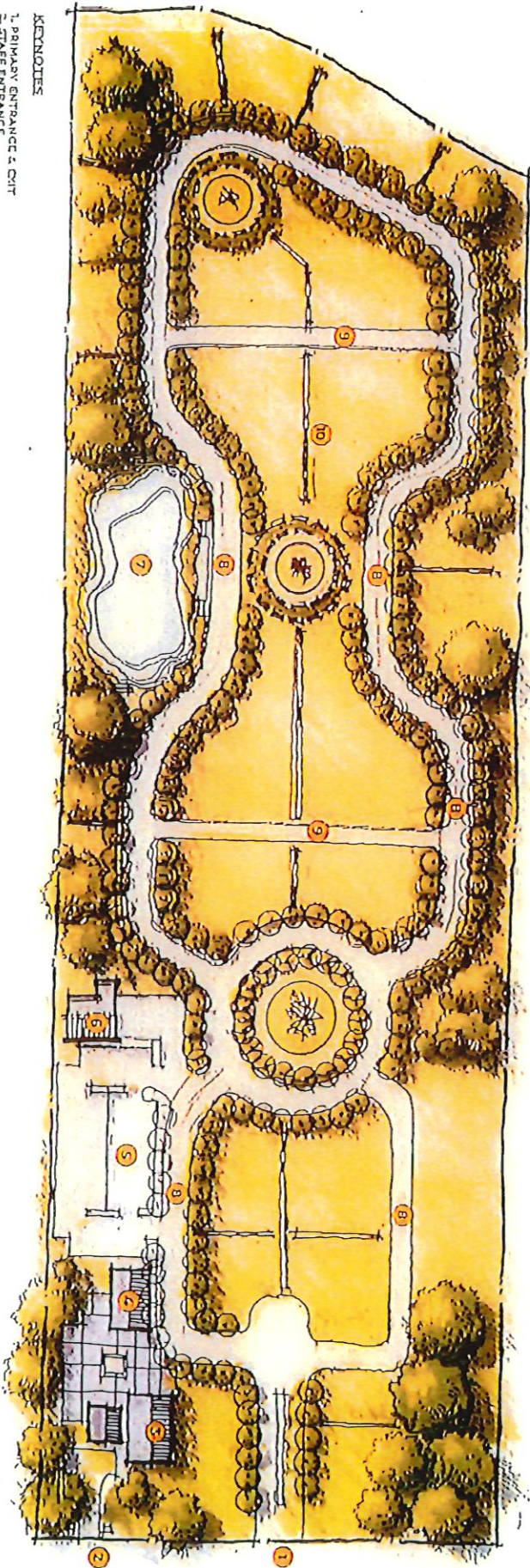
- 1. PRIMARY ENTRANCE & EXIT
- 2. STAFF ENTRANCE
- 3. EVENT SPACE
- 4. EXISTING OFFICE
- 5. PARKING LOT
- 6. PERFORMING BUILDING
- 7. POND
- 8. 20' WIDE DRIVE LANE (ALLOWS SPACE FOR 2-WAY TRAFFIC & PARKING ON EITHER SIDE)
- 9. 20' WIDE DRIVE LANE (ALLOWS SPACE FOR 2-WAY TRAFFIC)
- 10. PEDESTRIAN WALKING PATH



N
A
N

OPTION 2 - FORMAL/MEANDERING

VALPICO | TRACY, CA



- KEYNOTES**
- 1. PRIMARY ENTRANCE & EXIT
 - 2. STAFF ENTRANCE
 - 3. EVENT SPACE
 - 4. DISTING. OFFICE
 - 5. PARKING LOT
 - 6. MAINTENANCE BUILDING
 - 7. ENTERTAINMENT BUILDING
 - 8. 25' WIDE DRIVE LANE
 - 9. 20' WIDE DRIVE LANE
 - 10. PEDESTRIAN WALKING PATH

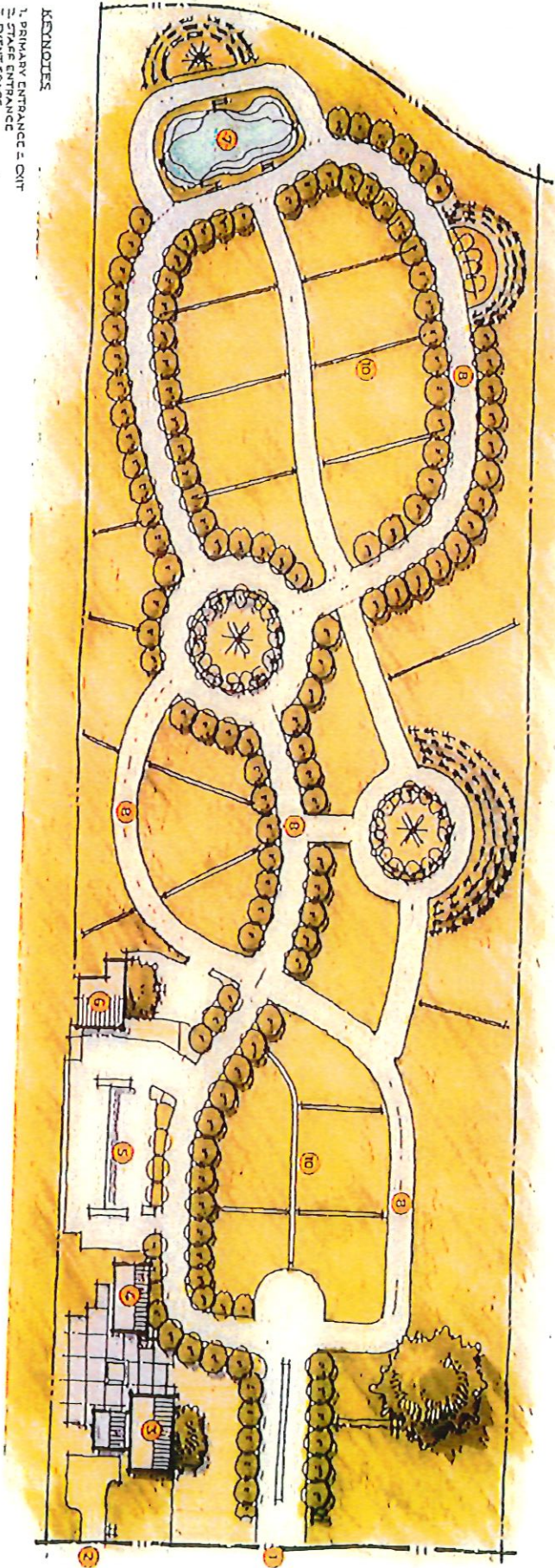


2
3
4

OPTION 3 - MEANDERING

VALPICO | TRACY, CA

- KEYNOTES
- 1. PRIMARY ENTRANCE - CMT
 - 2. STAFF ENTRANCE
 - 3. EVENT SPACE
 - 4. EXISTING OFFICE
 - 5. MARKING LOT BUILDING
 - 6. MARKING LOT
 - 7. DETENTION POND
 - 8. 50' WIDE DRIVE LANE (ALLOWS SPACE FOR 2-WAY TRAFFIC + PARKING ON EITHER SIDE)
 - 9. 20' WIDE DRIVE LANE (ALLOWS SPACE FOR 2-WAY TRAFFIC)
 - 10. PEDESTRIAN WALKING PATH



N	C
A	1